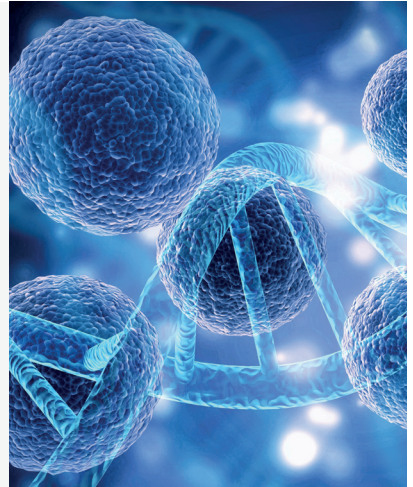


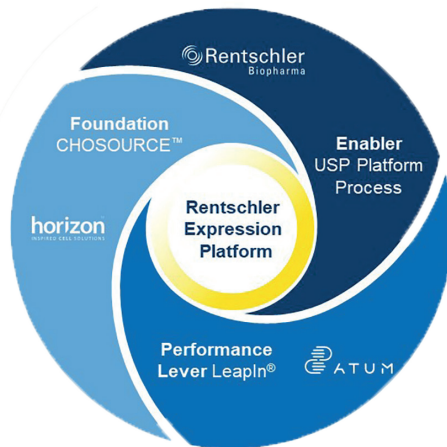
# UNLEASHING THE FULL POTENTIAL OF YOUR THERAPEUTIC PROTEINS

[WWW.RENTSCHLER-BIOPHARMA.COM](http://WWW.RENTSCHLER-BIOPHARMA.COM)



# RENTSCHLER BIOPHARMA'S DEDICATED CELL LINE DEVELOPMENT PLATFORM FOR STANDARD AND DIFFICULT-TO-EXPRESS MOLECULES

- Optimal timelines and minimal risk during CMC development
- Proven host cell and application of directed integration technology
- High titer and product quality for complex molecules
- Customized integrated vector design
- Seamless scale-up and cGMP transfer
- Well characterized USP Platform process



## Rentschler Biopharma SE

Erwin-Rentschler-Str. 21 · 88471 Laupheim · [www.rentschler-biopharma.com](http://www.rentschler-biopharma.com)

Full-service solutions to  
maximize the potential  
of your product



Learn more about our  
service offering